



ContiTread™ CrossTrac HD3 The robust construction tread.

Two worlds. One solution. The all-new ContiTread CrossTrac is designed for the most challenging on- and off-road applications.

Cold retreading performed by Continental – we combine innovative tyre production and retreading technologies so that the full cost-saving potential of cold retreading can be realised without compromising performance.

To ensure highest product and process quality, cold retreading with ContiTread is carried out by selected ContiTread partners.

ContiTread™ CrossTrac HD3



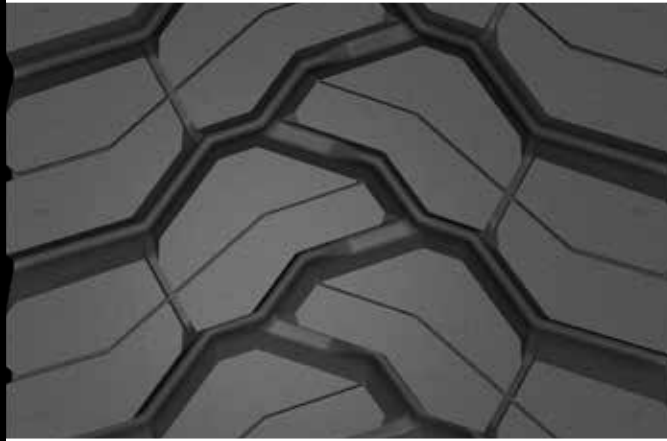
M+S



On/Off



Key benefits



- › **Excellent on- and off-road wear performance**
an innovative tread pattern delivers outstanding traction for both applications
- › **Minimal stone retention**
optimised gripper edges improve off-road grip and minimise stone retention.
- › **Extra tread durability and robustness**
thanks to integrated continuous tread blocks and enhanced chip, chunk and cut resistance

Two worlds. One solution.

Reliably roadworthy



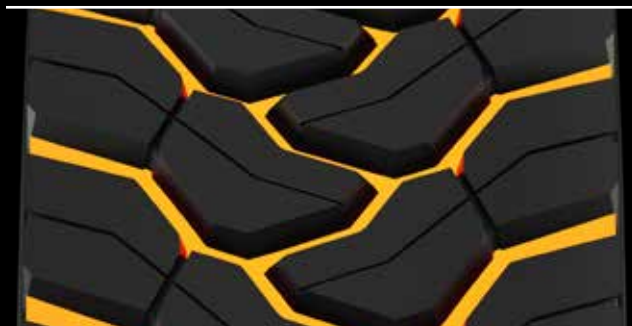
ContiTread CrossTrac HD3 perfectly meets all your on-road requirements: it delivers high mileage, smooth handling and reduced fuel consumption.

Unstoppable with wobble and rubble



With its enhanced chip, chunk and cut resistance, ContiTread CrossTrac HD3 proves to be a real workhorse in all off-road applications and under severe conditions.

Reliable traction for drive axle



ContiTread CrossTrac HD3 provides a directional pattern for excellent on- and off-road wear performance and traction. The new gripper edges maximise off-road traction and minimise stone retention, while the large ribs ensure maximum tear resistance.

Tyre Size

13 R 22.5

315/80 R 22.5

Tread Depth

21.5 mm

21.5 mm