



ContiTread™ Hybrid HD3

The performing drive-axle tread.

The drive-axle tread for the popular Conti Hybrid tyre line: Ensures maximum economic efficiency for fleet operators, mile after mile after mile.

Cold retreading performed by Continental
- we combine innovative tyre production and retreading technologies so that the full cost-saving potential of cold retreading can be realised without compromising performance.

To ensure highest product and process quality, cold retreading with ContiTread is carried out by selected ContiTread partners.

ContiTread™ Hybrid HD3



Regional



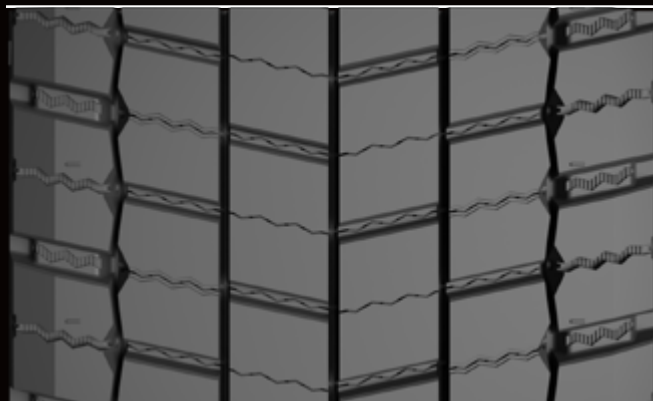
Motorway



M+S



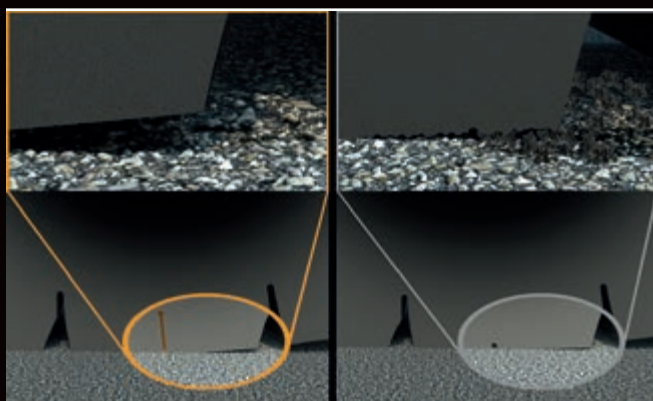
Key benefits



- › **Outstanding mileage**
the polymer rubber tread compound is specifically designed to increase mileage
- › **Wet performance**
exceptional drive-axle traction thanks to a high number of gripping edges
- › **Excellent driving stability**
3D sipes strengthen the stability of the block geometry

Tyre Size	Tread Depth
265/70 R 19.5	16.0 mm
285/70 R 19.5	16.0 mm

Block design with 3D sipes



3D sipes strengthen the stability of the pattern blocks and optimise the ground contact area, leading to improved wear performance.

At the same time, the high number of gripping edges improves the drive-axle traction.