



## **ContiTread™ HTR2 S**

Maximise your load volume.

**The ContiTread HTR2 S offers our proven tread pattern for trailer tyres optimised for high load volumes and extra load carrying capability.**

Cold retreading performed by Continental:  
We combine innovative tyre production and retreading technologies to realise the full cost-saving potential of cold retreading without compromising performance.

Cold retreading with ContiTread is carried out by selected ContiTread partners to guarantee the highest quality in production and processing.

# ContiTread™ HTR2 S

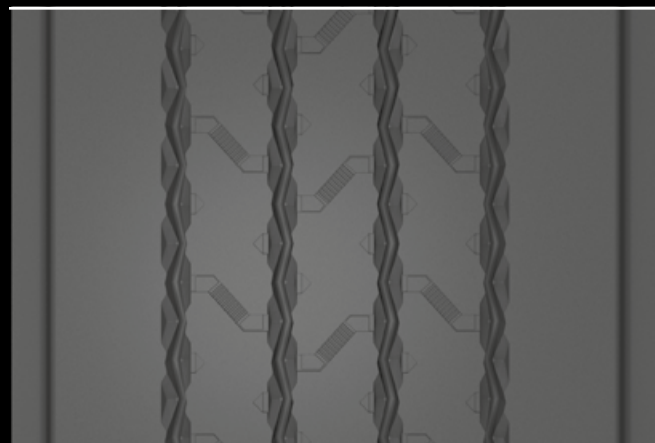
M+S



Regional



## Key benefits



- › **Extra-wide shoulder rib**  
to resist strong lateral forces on windy roads
- › **Robust tread compound**  
for extra load carrying capability
- › **Fuel-saving trailer tread**  
pattern and compound optimised to reduce rolling resistance

## Technical Highlights

### Shoulder “wings”



The shoulder is designed to withstand the high shear stresses being generated at the shoulder on trailers in regional traffic. A larger shoulder radius and improved shoulder groove provide stability and increase durability.

### High mileage



High tread volume and optimised layout with improved frictional distribution for more kilometres even under a range of different driving conditions.

### Tyre Size

### Tread Depth

235/75 R 17.5	12.5 mm
245/70 R 17.5	12.5 mm
385/55 R 19.5 (M)	14.5 mm
385/55 R 22.5 (M)	14.5 mm
385/65 R 22.5 (M)	14.5 mm
385/65 R 22.5	16.0 mm
425/65 R 22.5	16.0 mm

(M) = Medium Tread Depth