

ContiTread™ CrossTrac HT3

Crush your workload on- and off-road.

Two worlds. One solution. ContiTread CrossTrac HT3 for trailer tyres is made for the gravel pit and the road leading up to it.

Cold retreading performed by Continental:
We combine innovative tyre production and retreading technologies to realise the full cost-saving potential of cold retreading without compromising performance.

Cold retreading with ContiTread is carried out by selected ContiTread partners to guarantee the highest quality in production and processing.

ContiTread™ CrossTrac HT3



M+S



On/Off



Key benefits



- › **Improved durability**
the shoulder “wing” design and a large shoulder radius provide stability and increase durability
- › **Excellent grip**
the optimised rib shape keeps trailers on track on gravel, mud and snow
- › **High robustness**
flexible tread centre adapts to all surfaces and minimises the dangers of tearing or puncturing

Two worlds. One solution.

Reliably roadworthy



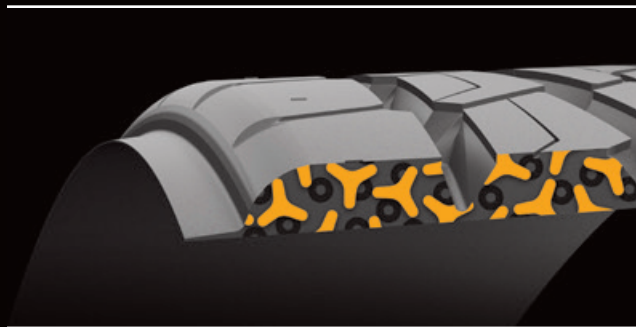
ContiTread CrossTrac HT3 perfectly meets all your on-road requirements: it delivers high mileage, smooth handling and reduced fuel consumption.

Unstoppable with wobble and rubble



With its enhanced chip, chunk and cut resistance, ContiTread CrossTrac HT3 proves to be a real workhorse in all off-road applications and under severe conditions.

Construction compound



A well-balanced mixture of activated carbon black and an extra-high amount of natural rubber offer high durability and outstanding robustness.

Tyre Size

385/65R22.5

Tread Depth

17.0 mm